

Official Football Signals



1
Ball ready for play
*Untimed down



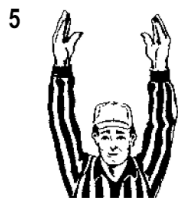
2
Start clock



3
Timeout
Discretionary or injury timeout
(follow by tapping hands on chest)



4
TV/radio timeout



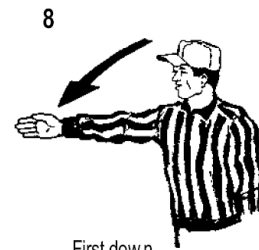
5
Touchdown, Field goal
Point(s) after touchdown



6
Safety



7
Ball dead
Touchback (move
side to side)



8
First down



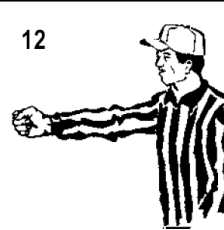
9
Loss of down



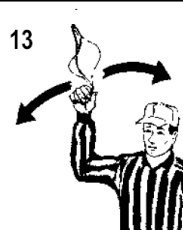
10
Incomplete forward pass
Penalty declined
No play, no score
Toss option delayed



11
Legal touching of forward
pass or scrimmage kick



12
Inadvertent whistle
(face press box)



13
Disregard flag



14
End of period



15
Sideline warning



16
Illegal touching or
30-second timeout
First touching (NF)



17
Uncatchable
forward pass



18
Offside defense
or free kick team
Encroachment (NF)



19
False start
Illegal formation
Encroachment offense



20
Illegal shift - 2 hands
Illegal motion - 1 hand



21
Delay of game



22
Substitution infraction

